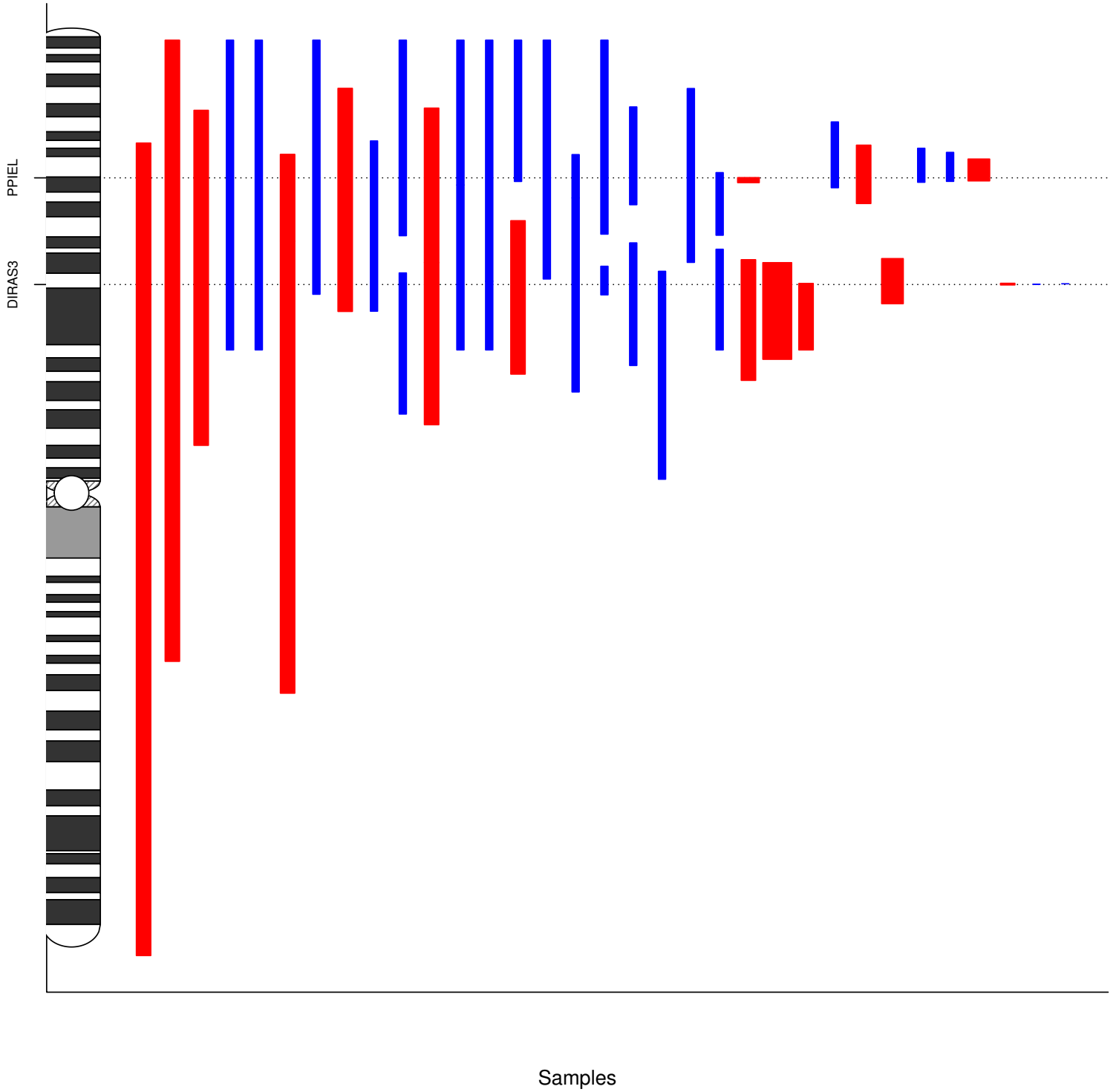


# LIHC nocnv Clusters chr 1 (Cancer amplifications and deletions)



**LIHC ncnv Clusters chr 1**  
**(Cancer amplifications and deletions)**  
**Legend**



(3.5,4]



(3,3.5]

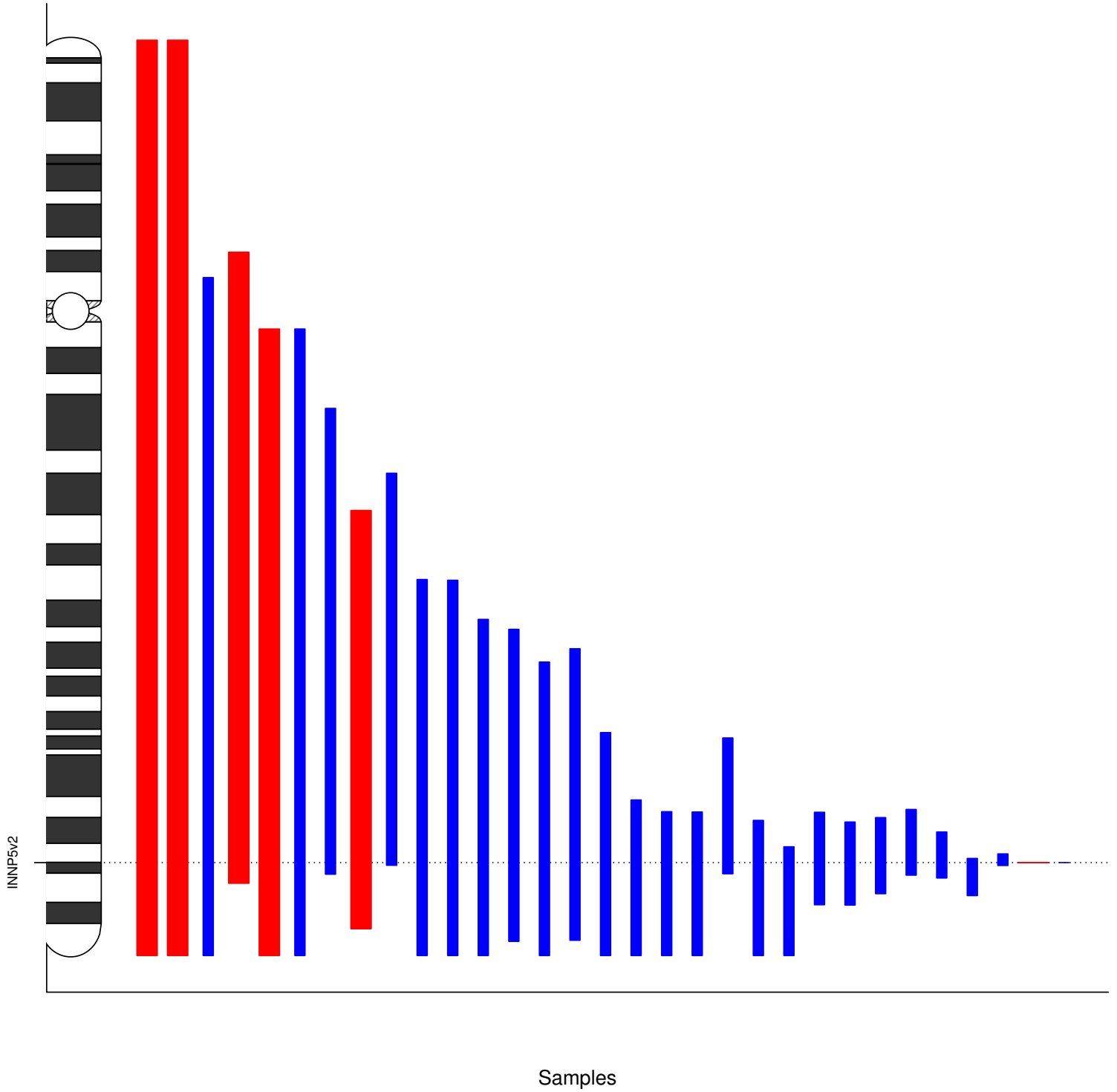


(2.5,3]



(-Inf,1.5]

**LIHC nocnv Clusters chr 10**  
**(Cancer amplifications and deletions)**



**LHC nocnv Clusters chr 10**  
**(Cancer amplifications and deletions)**  
**Legend**

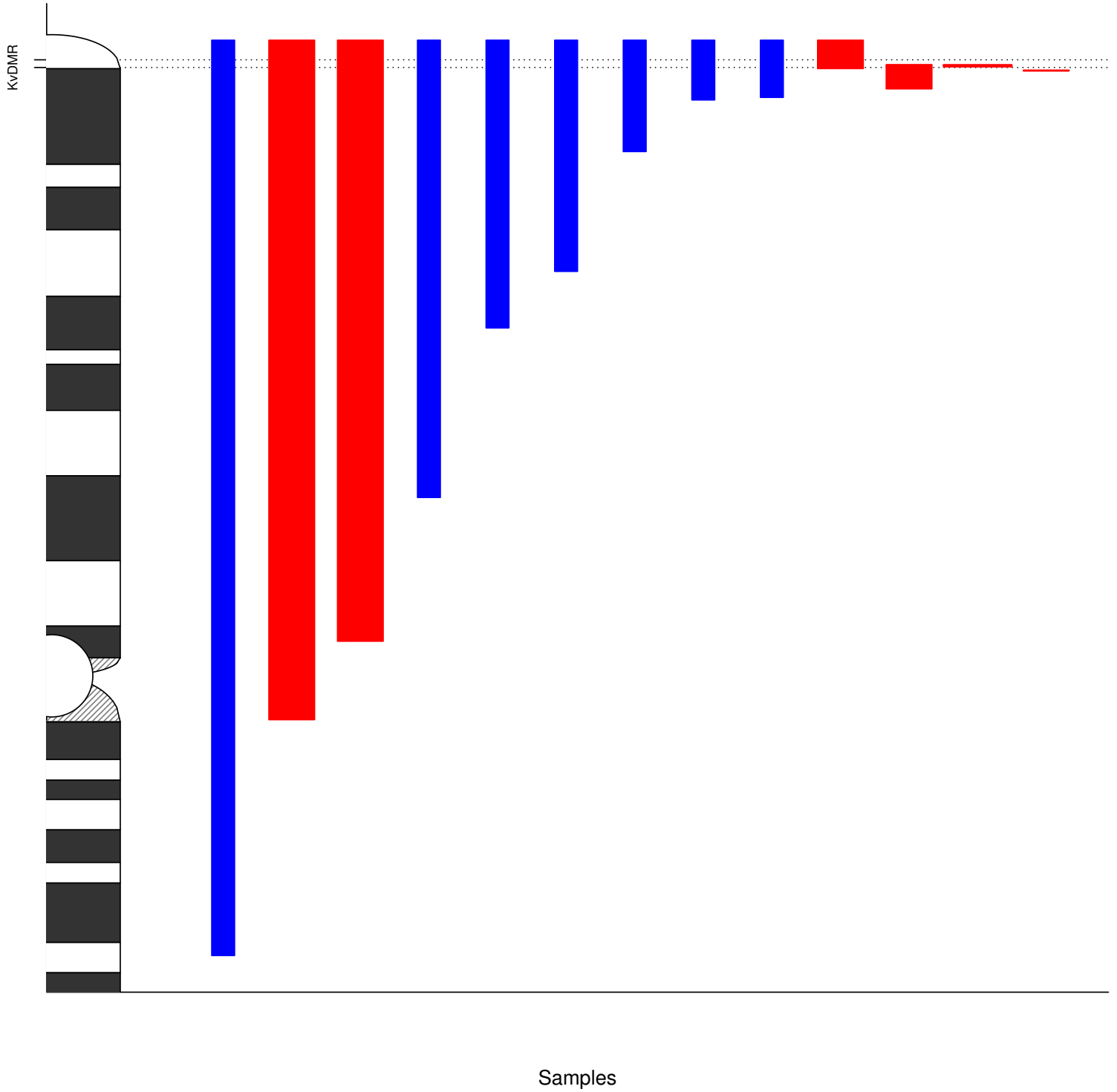


(2.5,3]



(-Inf,1.5]

**LIHC nocnv Clusters chr 11**  
**(Cancer amplifications and deletions)**



**LIHC nocnv Clusters chr 11**  
**(Cancer amplifications and deletions)**  
**Legend**



(3,3.5]

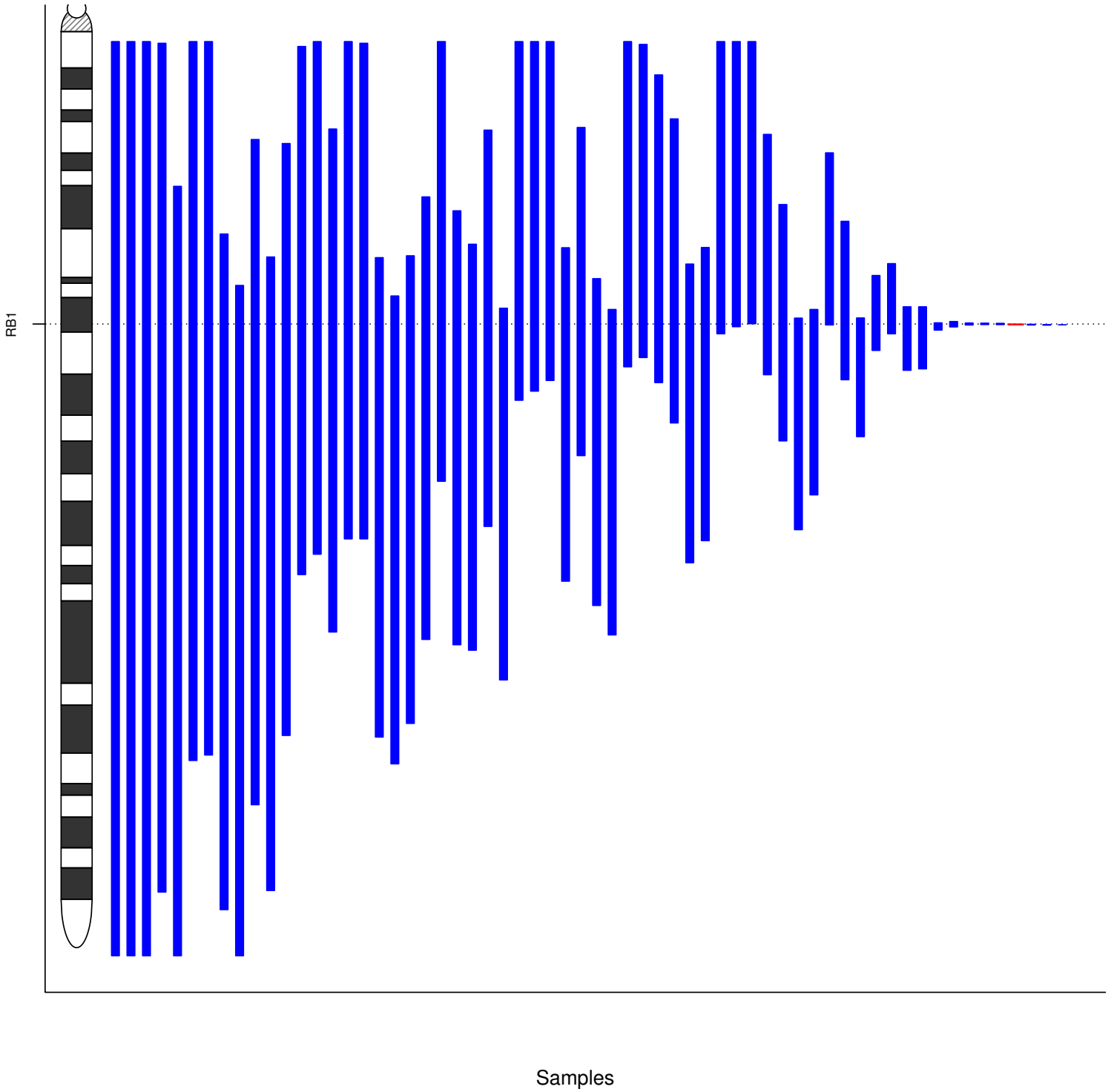


(2.5,3]



(-Inf,1.5]

**LIHC nocnv Clusters chr 13**  
**(Cancer amplifications and deletions)**



**LHC nocnv Clusters chr 13**  
**(Cancer amplifications and deletions)**

**Legend**



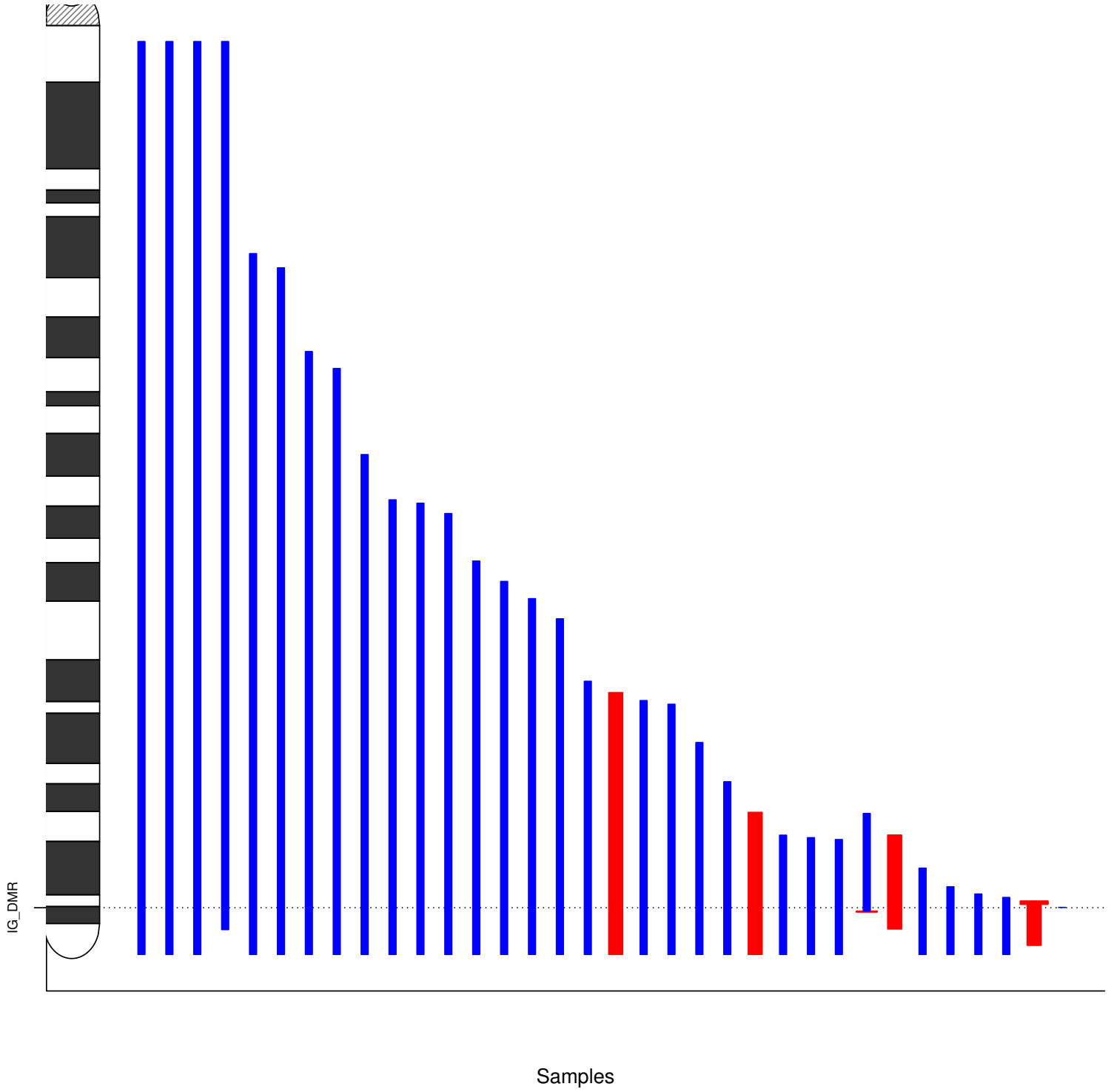
(2.5,3]



(-Inf,1.5]



**LIHC nocnv Clusters chr 14**  
**(Cancer amplifications and deletions)**



**LHC nocnv Clusters chr 14**  
**(Cancer amplifications and deletions)**  
**Legend**



(3,3.5]



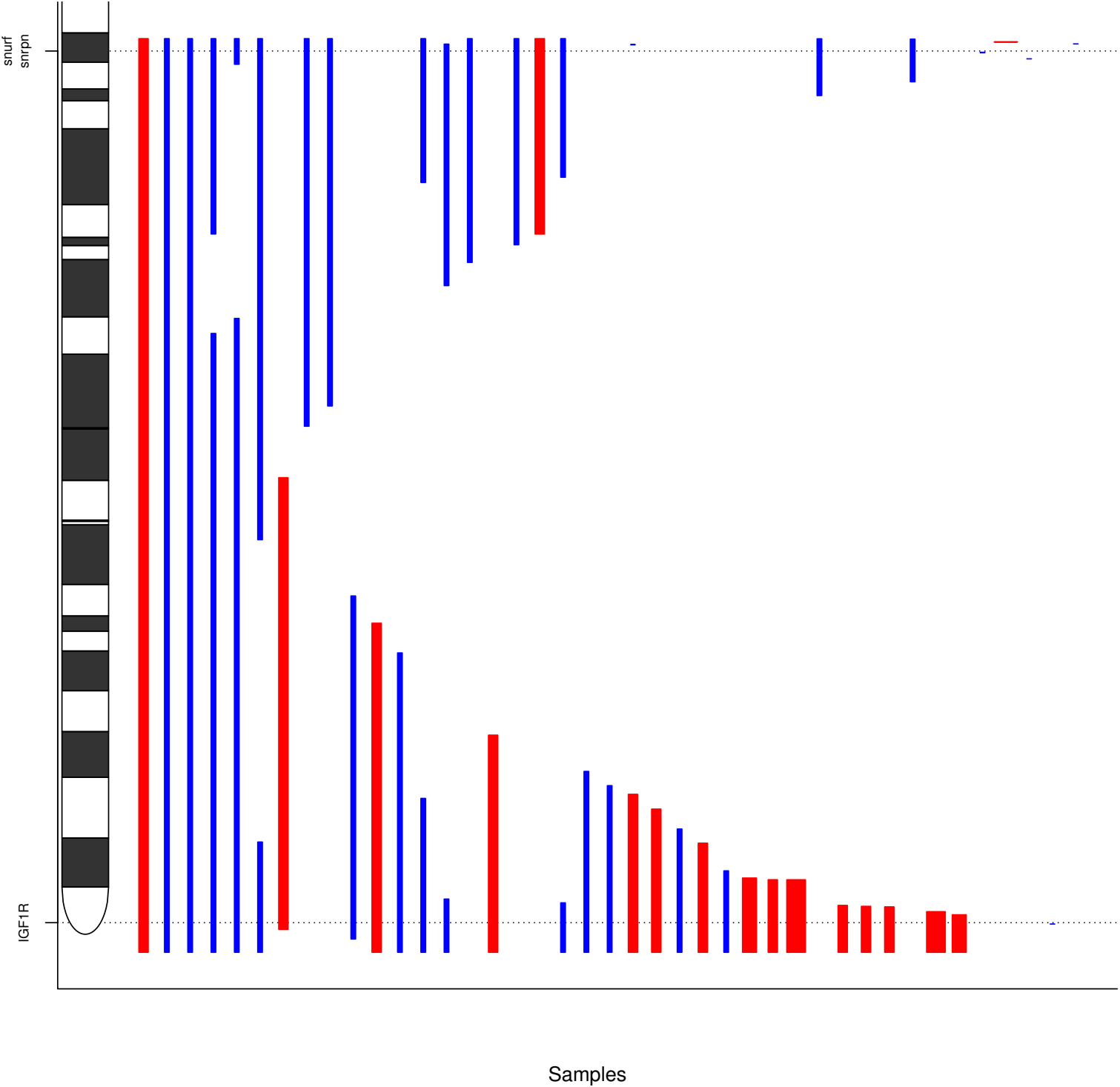
(2.5,3]



(-Inf,1.5]

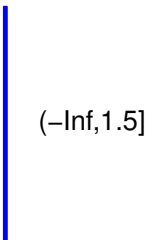
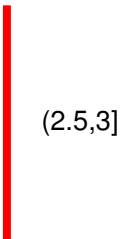


**LHC nocnv Clusters chr 15**  
**(Cancer amplifications and deletions)**

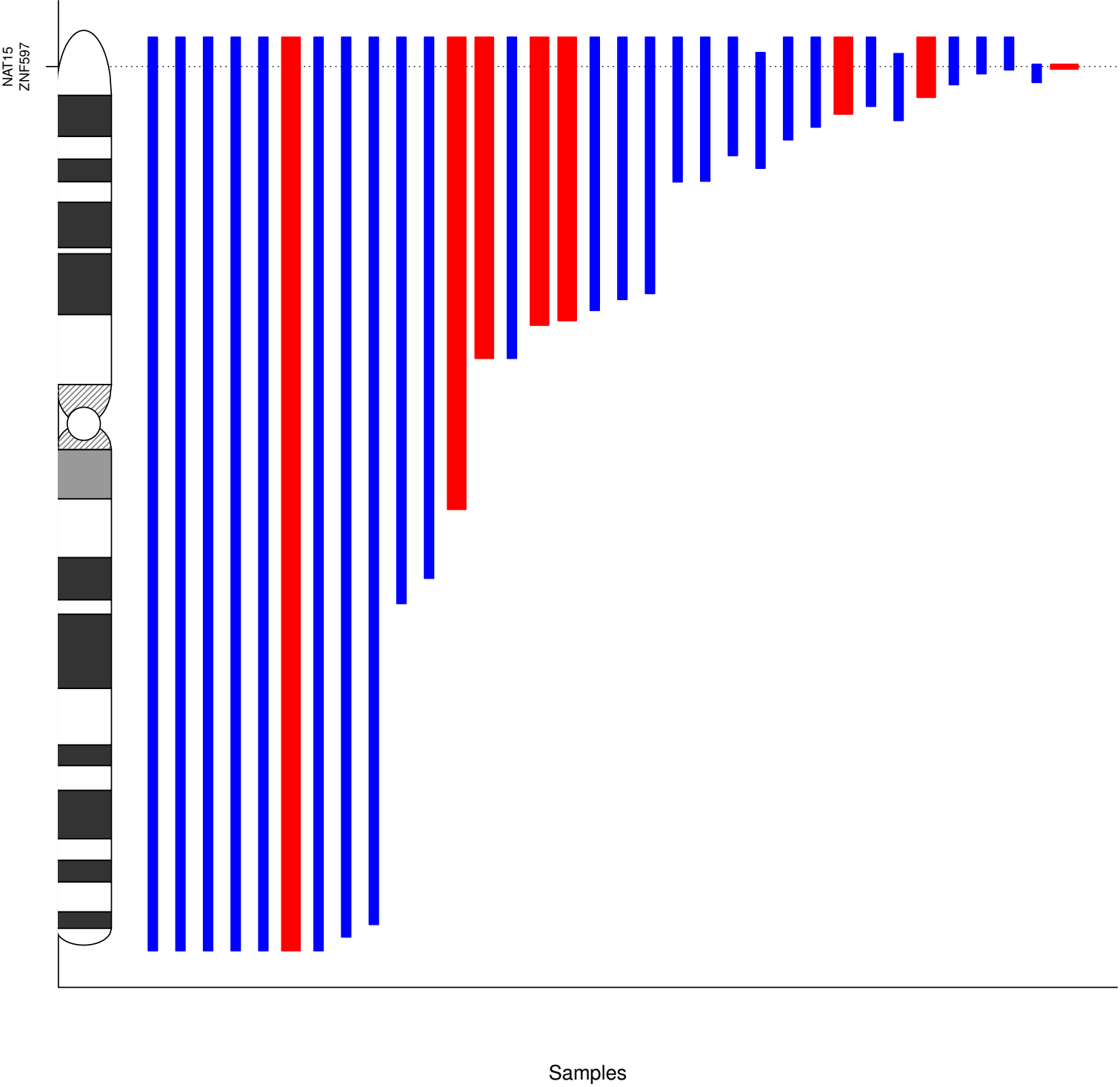


**LHC nocnv Clusters chr 15**  
**(Cancer amplifications and deletions)**

**Legend**



**LIHC nocnv Clusters chr 16**  
**(Cancer amplifications and deletions)**



**LHC nocnv Clusters chr 16**  
**(Cancer amplifications and deletions)**  
**Legend**



(3.5,4]

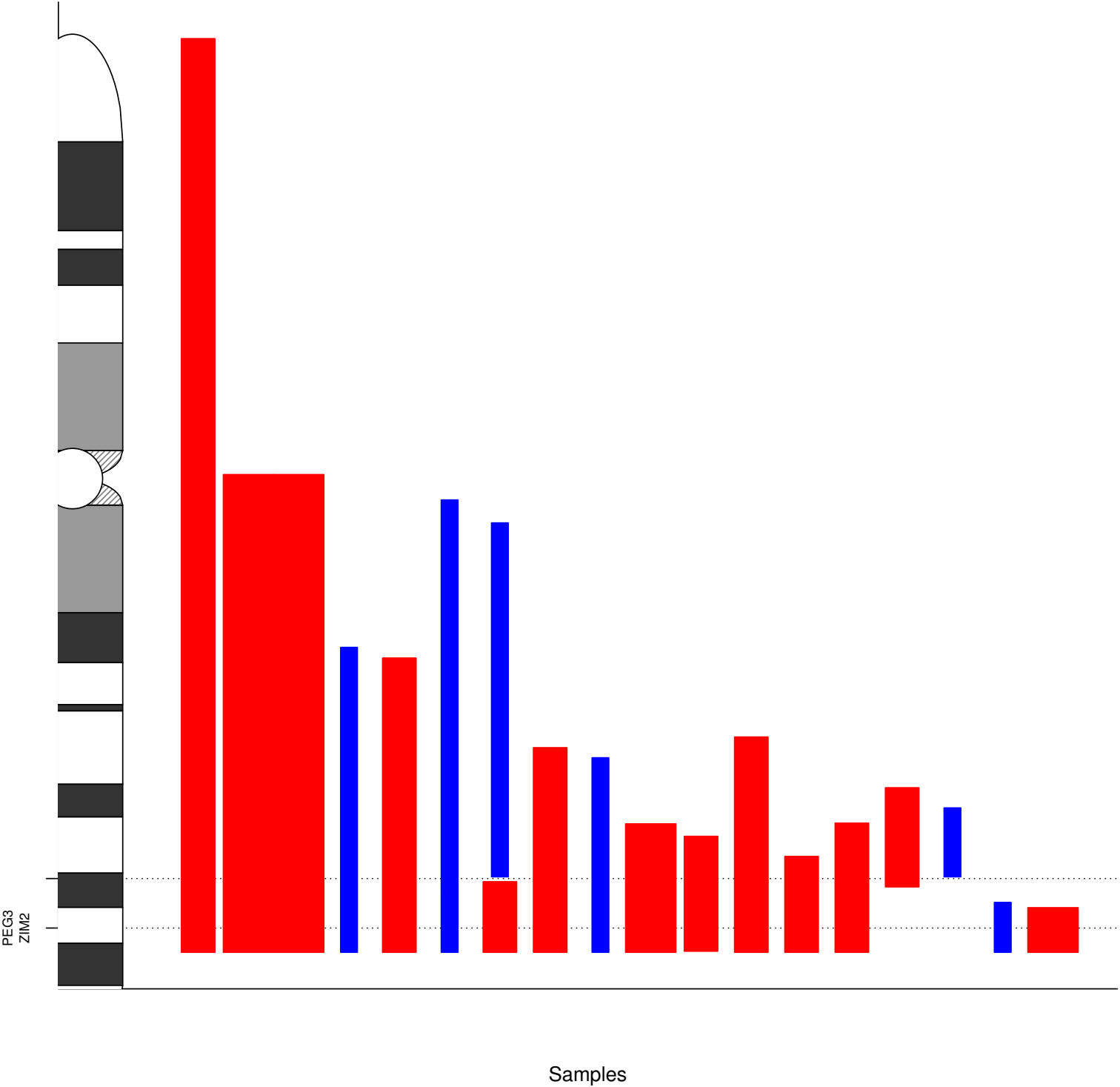


(2.5,3]



(-Inf,1.5]

**LIHC nocnv Clusters chr 19**  
**(Cancer amplifications and deletions)**



**LIHC nocnv Clusters chr 19**  
**(Cancer amplifications and deletions)**  
**Legend**



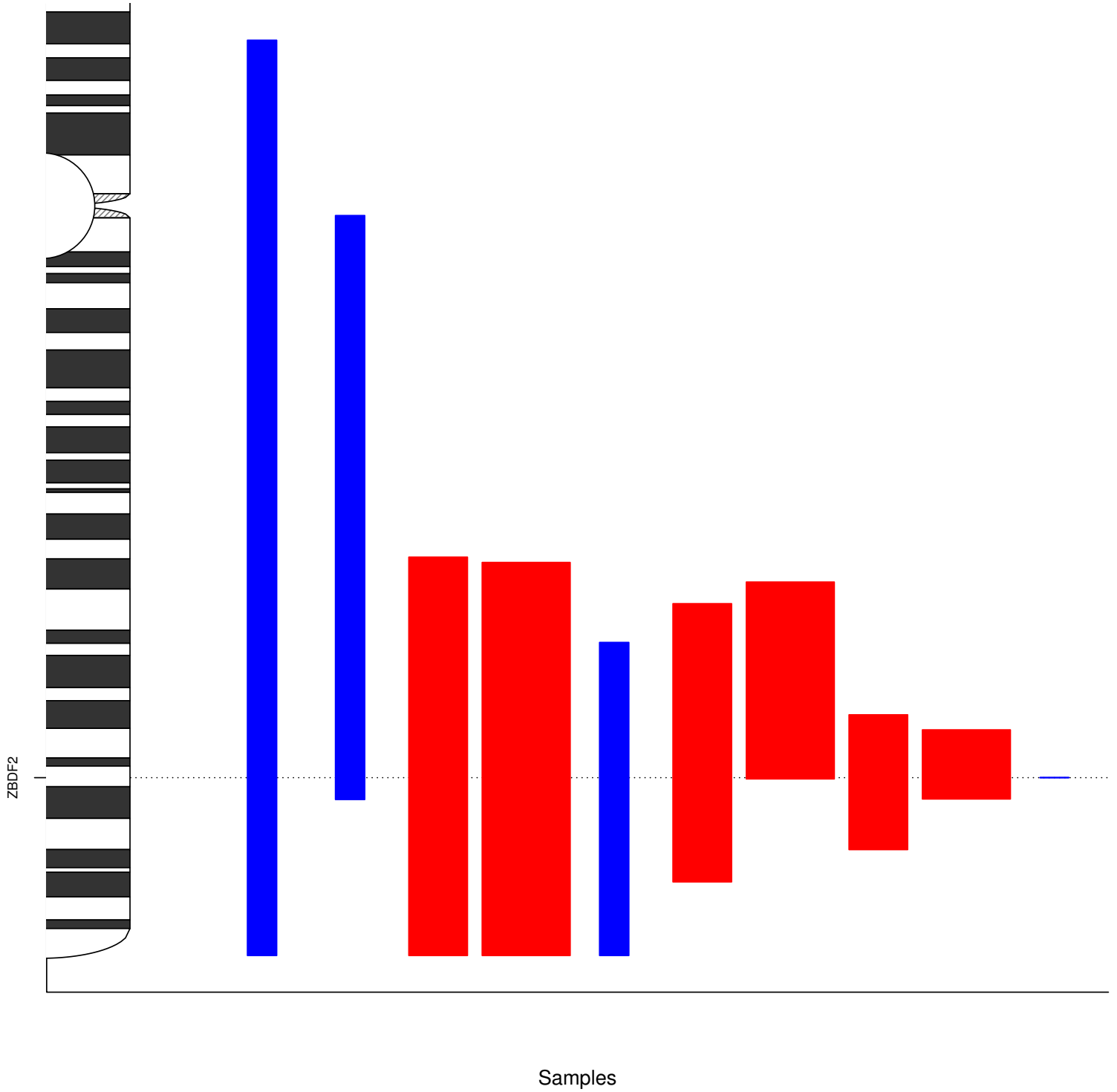
(2.5,3]



(-Inf,1.5]



**LHC nocnv Clusters chr 2**  
**(Cancer amplifications and deletions)**



**LHC nocnv Clusters chr 2**  
**(Cancer amplifications and deletions)**

**Legend**



(-Inf,3]

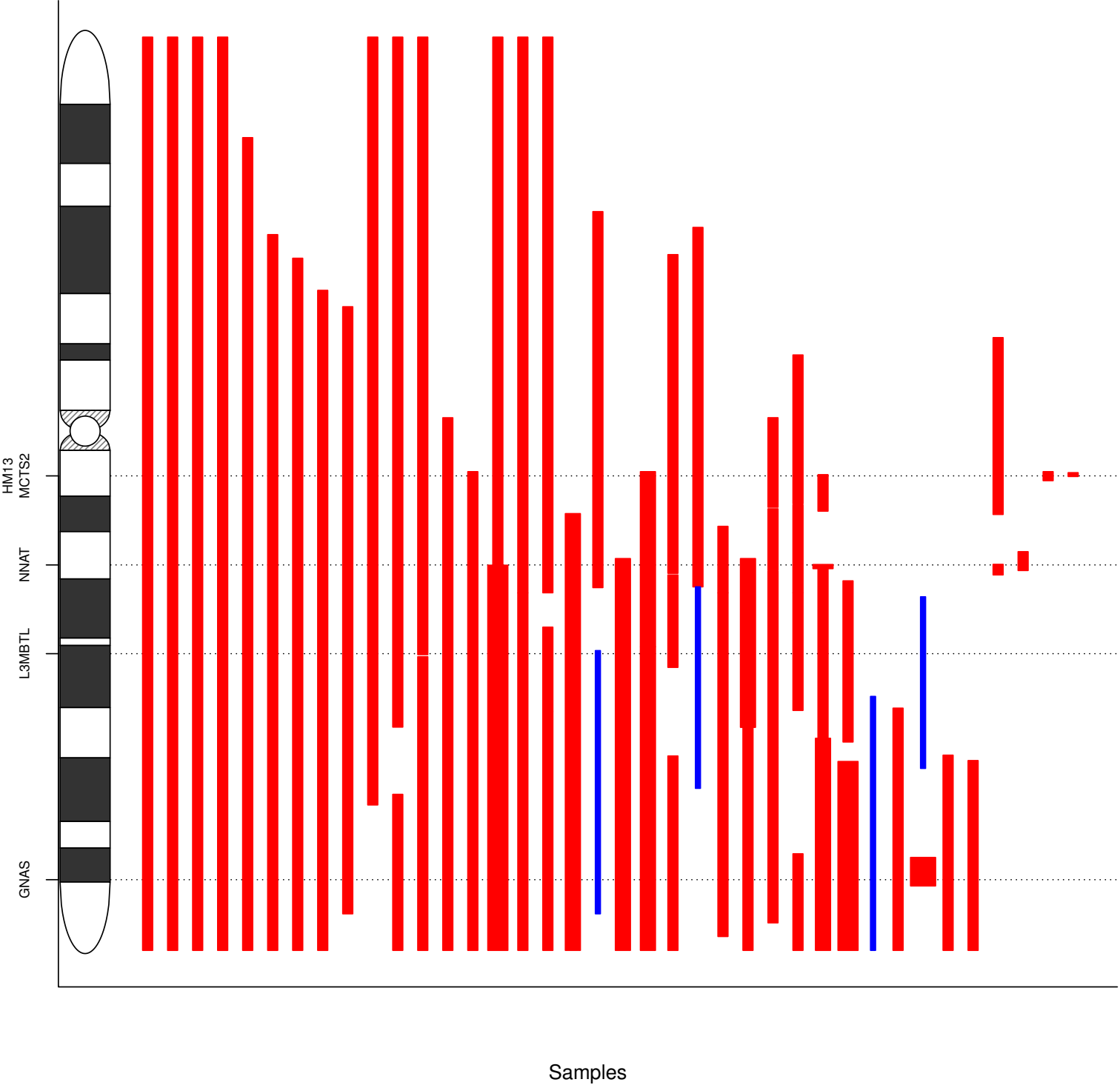


(2.5,3]




(-Inf,1.5]

LIHC nocnv Clusters chr 20  
(Cancer amplifications and deletions)




**LHC nocnv Clusters chr 20**  
**(Cancer amplifications and deletions)**


**Legend**

 (8, Inf]

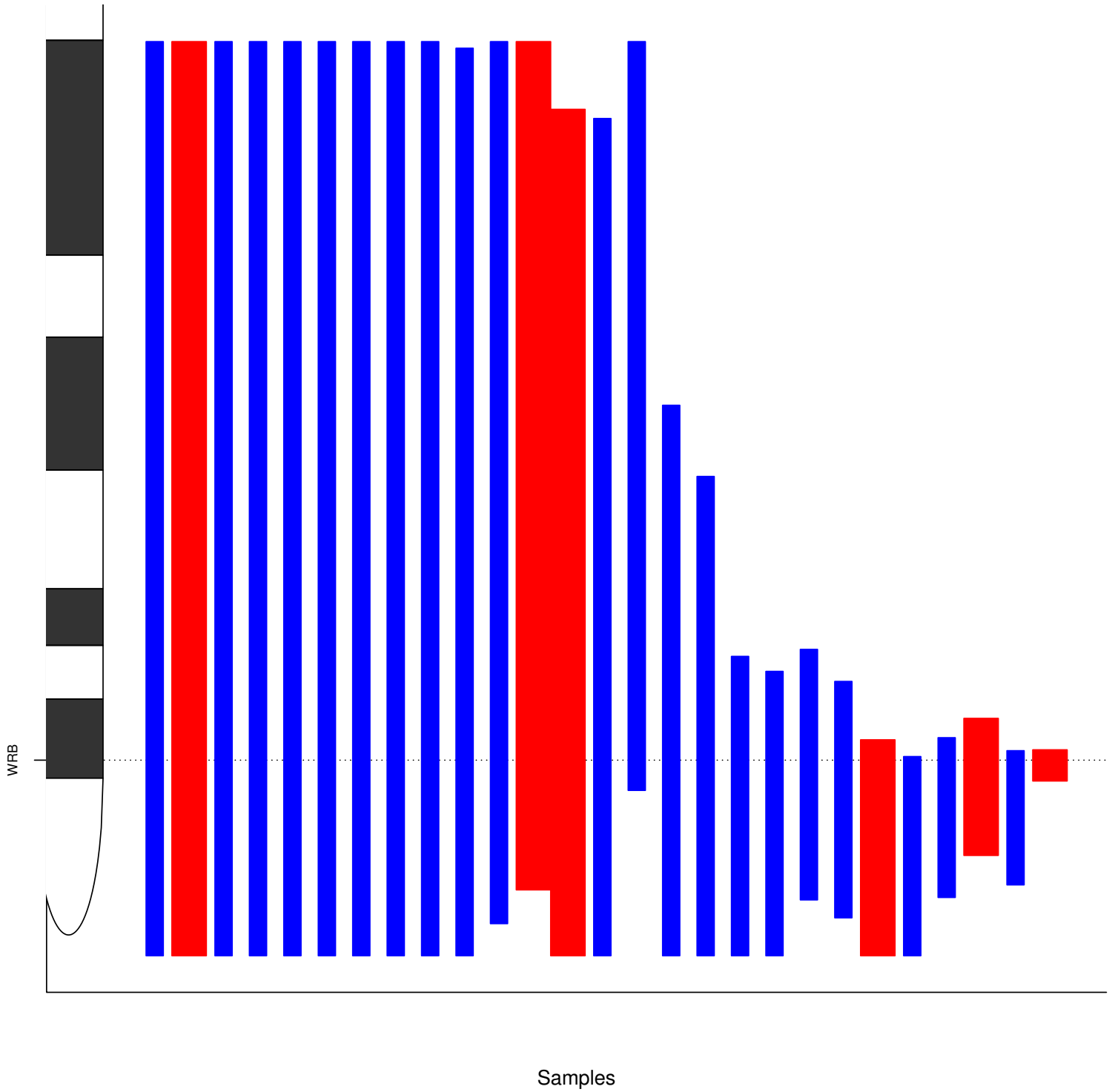
 (3.5,4]

 (3,3.5]

 (2.5,3]

 (-Inf,1.5]

**LIHC nocnv Clusters chr 21**  
**(Cancer amplifications and deletions)**

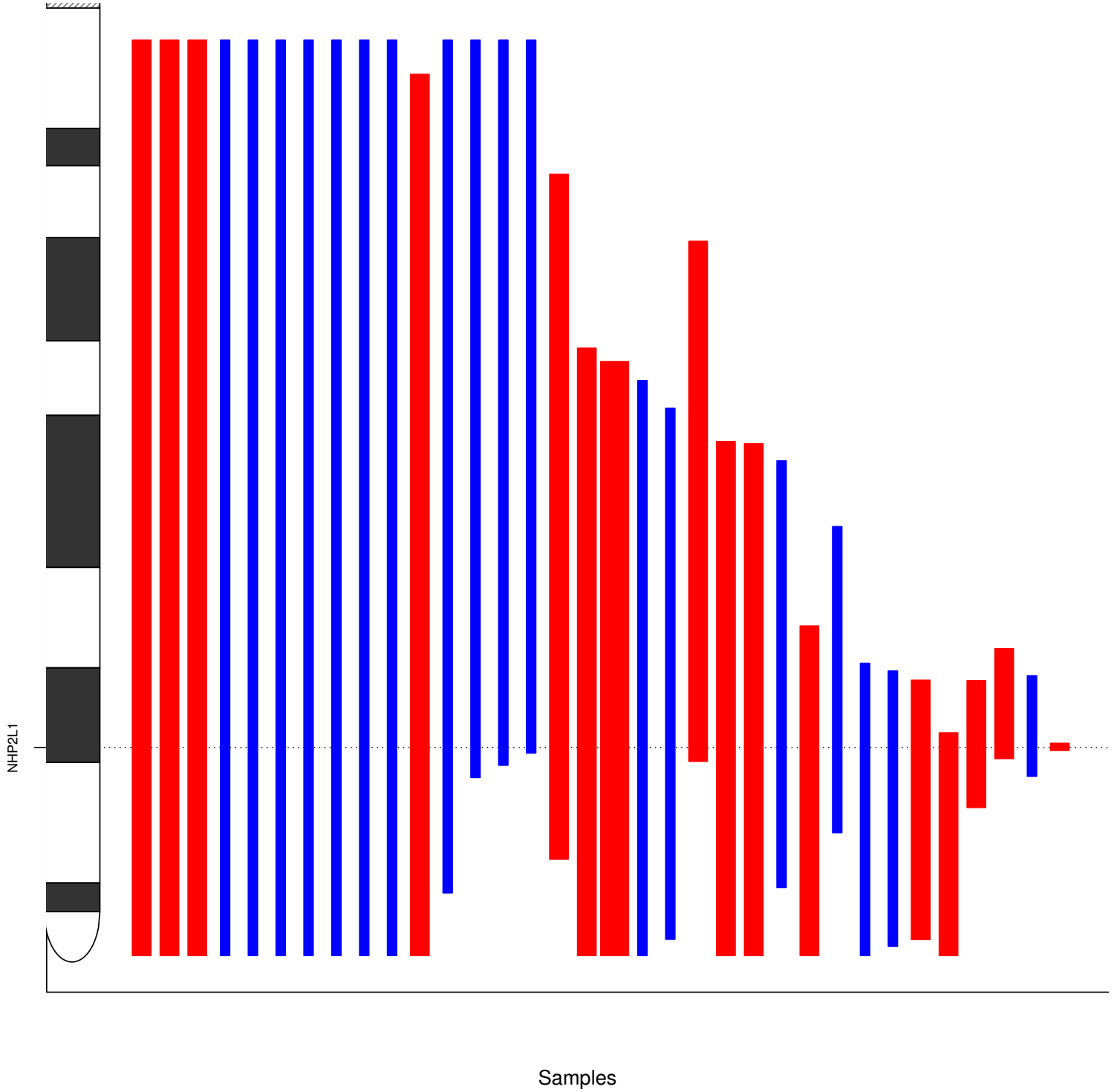


**LHC nocnv Clusters chr 21**  
**(Cancer amplifications and deletions)**  
**Legend**



(-Inf,1.5]

**LIHC nocnv Clusters chr 22**  
**(Cancer amplifications and deletions)**



**LHC nocnv Clusters chr 22**  
**(Cancer amplifications and deletions)**

**Legend**

(3,3.5]



(2.5,3]

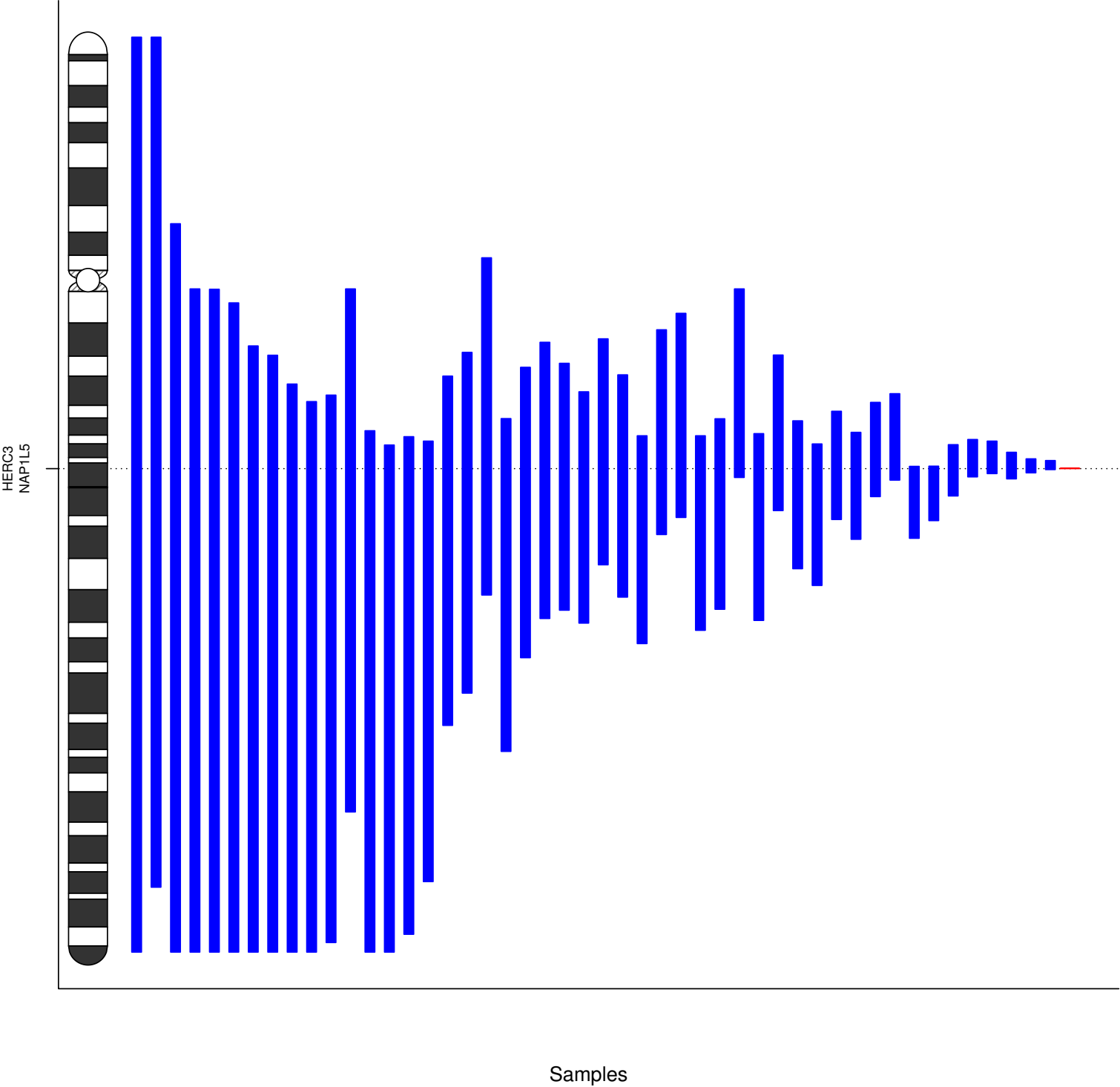


(-Inf,1.5]



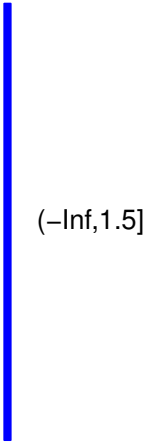


**LIHC nocnv Clusters chr 4**  
**(Cancer amplifications and deletions)**

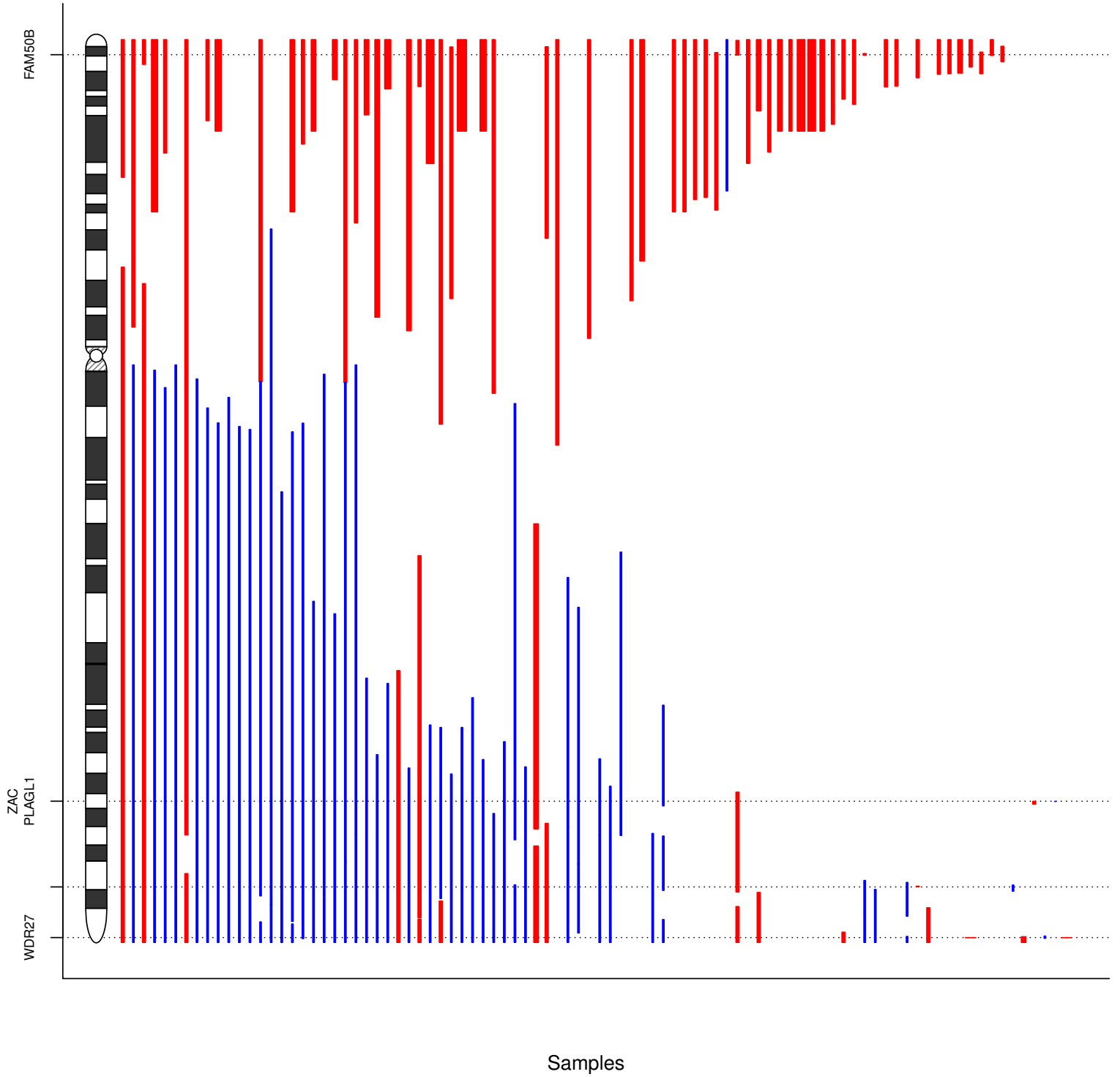


**LIHC ncnv Clusters chr 4**  
**(Cancer amplifications and deletions)**

**Legend**



# LIHC nocnv Clusters chr 6 (Cancer amplifications and deletions)



**LIHC ncnv Clusters chr 6**  
**(Cancer amplifications and deletions)**

**Legend**

(8, Inf]

(4.5,5]

(4,4.5]

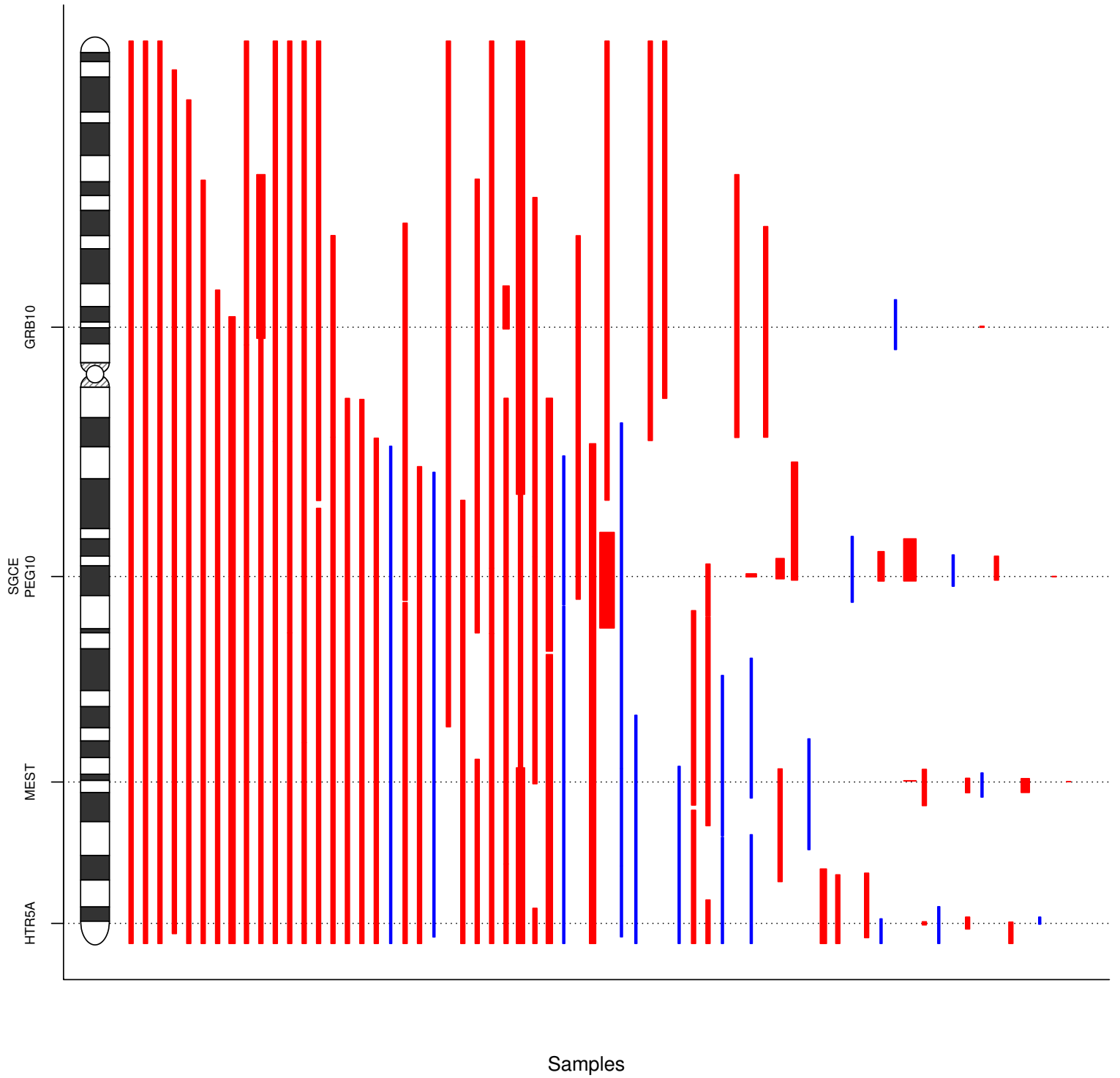
(3.5,4]

(3,3.5]

(2.5,3]

(-Inf,1.5]

# LIHC nocnv Clusters chr 7 (Cancer amplifications and deletions)



**LIHC nocnv Clusters chr 7**  
**(Cancer amplifications and deletions)**


**Legend**


 (5.5,6]


 (4.5,5]

 (4,4.5]

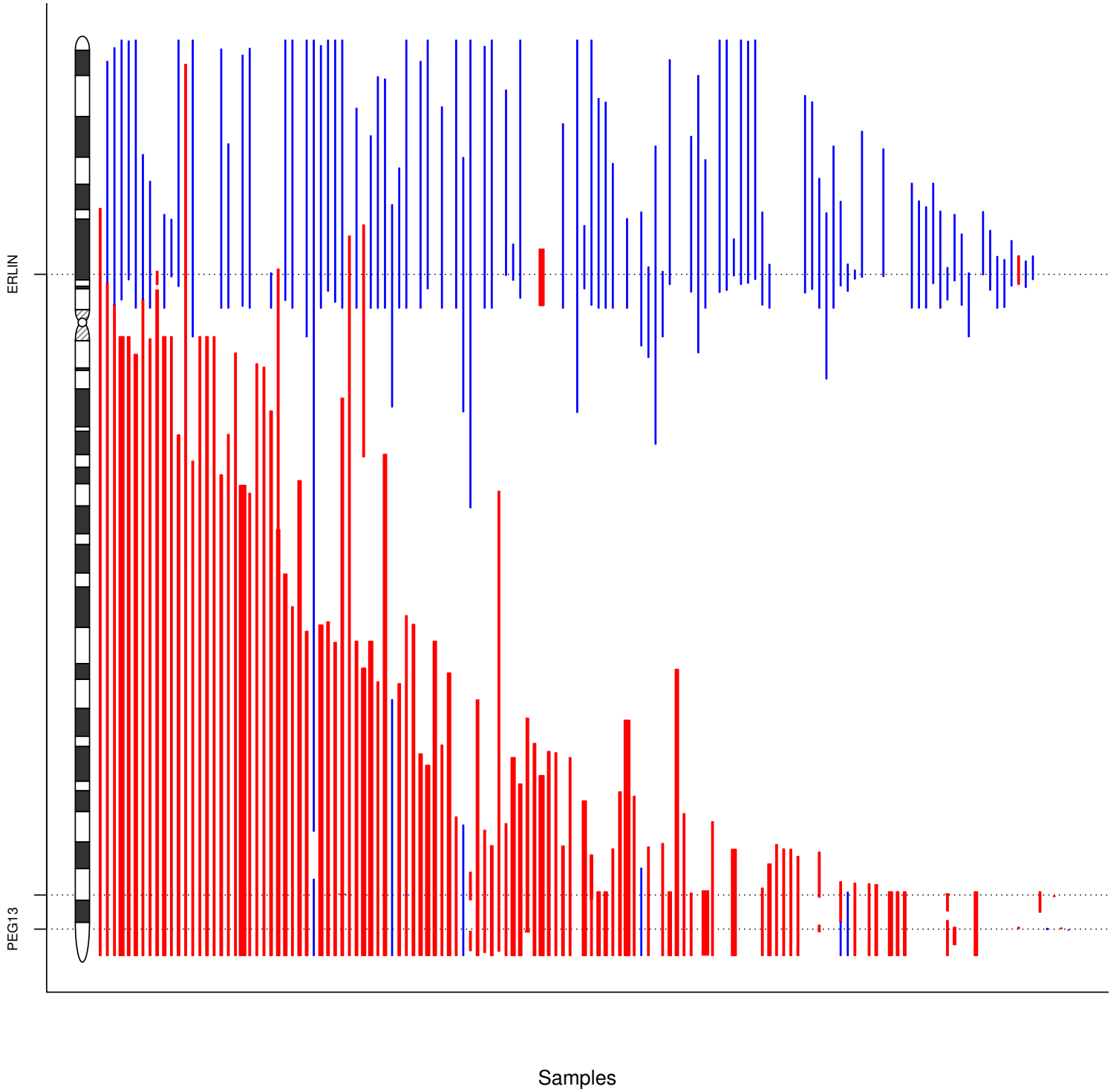
 (3.5,4]

 (3,3.5]

 (2.5,3]

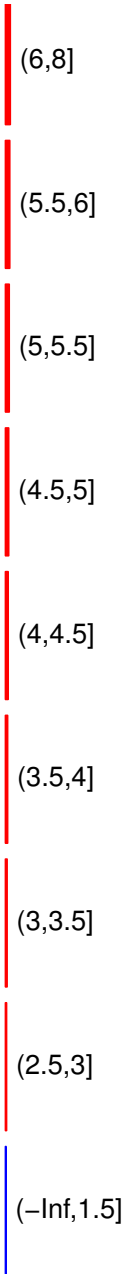
 (–Inf,1.5]

# LIHC nocnv Clusters chr 8 (Cancer amplifications and deletions)



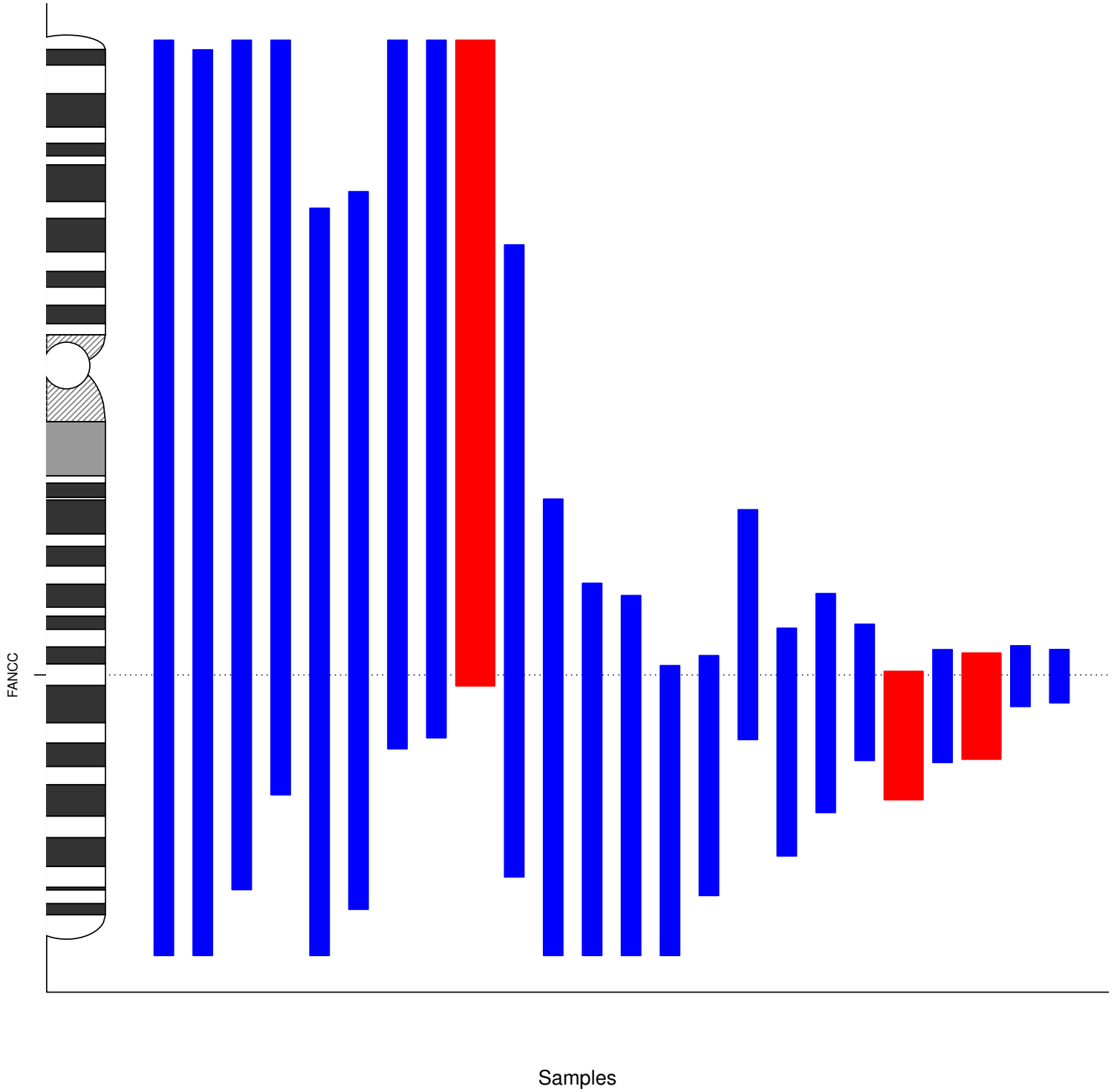
**LIHC ncnv Clusters chr 8**  
**(Cancer amplifications and deletions)**

**Legend**





**LIHC nocnv Clusters chr 9**  
**(Cancer amplifications and deletions)**



**LIHC ncnv Clusters chr 9**  
**(Cancer amplifications and deletions)**  
**Legend**



(-Inf,1.5]